

EVERY THING

A woman in a red coat and hat holding a white umbrella, standing in a window. Two women in white dresses are kneeling on the floor in front of the window.

Eurydice

UConn | SCHOOL OF FINE ARTS

DRA
DRAMATIC ARTS

“theatre is

**NOT JUST
AN ART**

it is a way of

**ENGAGING,
CHALLENGING,
& CONNECTING
WITH EACH OTHER.”**

UConn's Department of Dramatic Arts has created an exciting center for excellence in theatre. We aim to provide the finest possible professional training through classroom and studio instruction. And enrich that training by providing opportunities for students to obtain professional level production experience through active participation in plays produced by the Connecticut Repertory Theatre, the on campus producing arm and regional theatre.

“



You'll realize the actor you want to be, the artist you want to be, the performer you want to be and you'll make an incredible family while you are doing it."

Casey
Acting

“



This program is what you make of it. You're able to find the opportunities if you work hard. The door is open for you to walk through at any moment."

Eddie
Theatre Studies / Directing,
Dramaturgy &
Stage Management

“



The faculty care about you as a professional and as an artist. They want you to be yourself and be the best that you can be and work the hardest that you can."

Megan
Acting



we provide

MAXIMAL OPPORTUNITIES

for students
to obtain
professional level
production
experience

for a
fulfilling career
in theatre.

DAN ROUSSEAU

CLASS OF 2008

LIGHTING DESIGN / TECHNICAL THEATRE



Lit the hockey arena at the 2018 Winter Olympic Games in South Korea.

Won an Emmy Award for Outstanding Lighting Direction and Scenic Design for NBC News' coverage of the 2012 Presidential election, "Decision 2012 - Election Night Coverage from Democracy Plaza."

Won a second Emmy Award for Lighting Direction in 2016 for the special event "CNN Heroes."

Is the Lighting Designer for Split Knuckle Theatre, which produces innovative theater productions that have been presented in New York City, Paris, and around the US.

Worked on several lighting designs for theatre, including those presented off-Broadway, Playhouse on Park in West Hartford, and with Shakespeare and Company in Lenox, Mass.

On New Year's Eve, he is in Times Square for CNN's coverage hosted by Anderson Cooper.

Started as CNN's Assistant Lighting Director for a variety of shows including "Showbiz Tonight," "Fareed Zakaria GPS," "Lou Dobbs Tonight," and "The Joy Behar Show."

Currently CNN's Lighting Designer for "Cuomo Prime Time," "Anderson Cooper Full Circle" (a Facebook Live show), and "Quest Means Business" on CNN International.

Since 2008, Dan has worked at The Lighting Design Group in New York City, the largest television lighting design firm on the East Coast.

"I AM GRATEFUL FOR THE TIME I SPENT AT UCONN, WHEN I WAS HONING MY SKILLS IN HOW TO CREATE A VISUAL IMAGE ON STAGE, CRAFTING SKILLS IN COLOR AND TEXTURE, AND FINDING A WAY OF CAPTURING THE AUDIENCE AND BRINGING THEM INTO THE SCENE."



The Crucible

PERFORMANCE SPACES & THEATRES



Shrek

The Grapes of Wrath



The Dramatic Arts Department and the Connecticut Repertory Theatre use three very different spaces. Each semester two Main Stage series shows are produced either in the Harriet S. Jorgensen Theatre or the Nafe Katter Theatre. While the Studio Works series is performed in the intimate Studio/Mobius space.

HARRIET S. JORGENSEN THEATRE

This 500-seat proscenium theatre utilizes extensive modern lighting, sound systems, and a counterweight fly system. The theatre is also equipped with automation abilities and motorized rigging, a common staple of CRT's productions, which utilizes some of the most up-to-date technology available in the entertainment industry.

NAFE KATTER THEATRE

This innovative theatre has 235 seats and is named after its main benefactor, Emeritus Professor Nafe Katter. The stage is a thrust with a modified fly-house, which allows audience intimacy combined with modern stagecraft.

STUDIO + MOBIUS THEATRE

The 100-seat Studio Theatre shares its support facilities with the Mobius Theatre, a historic environmental black box space. The Studio/Mobius complex houses our Studio Works Series and several student-directed dramatic, musical, and Puppet Arts events.



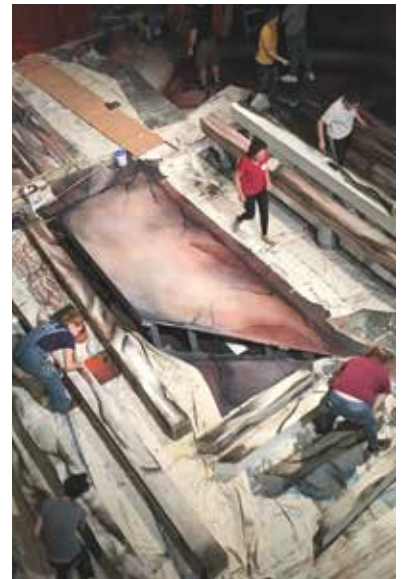
PUPPET ARTS COMPLEX

The Puppet Arts Complex is located at the Depot Campus, a satellite university location three miles from the main campus and home to the Puppet Arts division and the department's props facilities. The complex includes a high-tech classroom, puppet arts library, computer lab, large rehearsal room with resilient floor, and newly installed lighting system. There is also a plaster casting room, dye-vat room, puppetry wood shop and a large studio with individual work spaces for each Puppet Arts undergraduate and graduate student.



PROPERTIES SHOP

The Properties Shop has hand prop storage, a sewing room, offices and a scene shop with MIG welder and typical metal and wood working tools. There is also a 1,200 sq-ft storage facility at the depot campus which is shared by the Carpentry, Props and Puppet Arts divisions.



HSJ SCENE SHOP

The HSJ Scene Shop is located behind the Harriet S. Jorgensen Theatre, immediately adjacent to the stage. The scene shop is a 16' x 40' space, which houses all major wood working and welding equipment. There is also a counter-weighted paint frame and paint gallery for painting drops up to 22' x 41'. On the second floor, the Paint Shop provides an area for mixing color and testing paint techniques, as well as storage for show paint and tools.

LEARNING FACILITIES



COSTUME SHOP

The Costume Shop is located upstairs from the Harriet S. Jorgensen Theatre and is outfitted with the equipment found in most professional theatrical costume shops. The costume storage is over 1600 square feet and houses costumes produced and collected by the department for over 50 years.



LIGHTING DESIGN LABORATORY

Our Lighting Design Laboratory is a center for exploration and experimentation for both students and faculty. It is equipped with an ETC Element control console, 24-2.4kw dimmers, and its own inventory of lighting instruments. The lab also contains sample cuts of all current filters in the Roscolux, Lee, and GAM color lines.



UNDERGRADUATE STUDENT DESIGN STUDIO

The Undergraduate Design Studio is equipped with drafting tables, plan files and pin up boards, model shelves, a Smart Board and audio visual teaching equipment.

BY THE NUMBERS

25

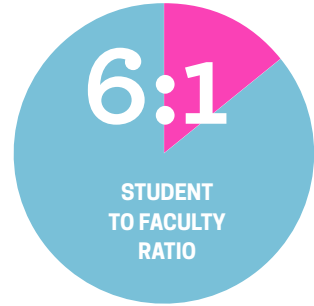
FACULTY MEMBERS

who are among the nation's best actors, designers, teachers, and artists

111

UNDERGRADUATE STUDENTS

collaborating on performances



13+

PRODUCTIONS EVERY YEAR

including the Nutmeg Summer Series under the direction of Terrence Mann

4

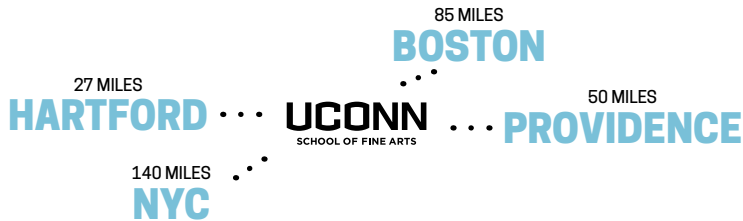
PERFORMANCE SPACES

for musicals, plays, puppetry, and dramatic theatre productions

15+

VISITING PROFESSIONAL ARTISTS

work & perform alongside students every year



1

THE ONLY SCHOOL FOR PUPPETRY

with a full-time Puppet Arts BFA program in the United States

King Lear



APPLY

drama.uconn.edu/apply

1 Review the Application Process
drama.uconn.edu/apply

2 Submit an Application for Admission to the University of Connecticut
admissions.uconn.edu

3 Showcase Your Talent
An audition, portfolio review, interview, and/or a separate application is required depending on your preferred focus area:

Acting

Set up an Appointment for an Audition

drama.uconn.edu/programs/acting/apply-audition

Design & Technical Production

Set up an Appointment for a Portfolio Review

drama.uconn.edu/bfa-design-tech-application

Puppetry

Set up an Appointment for an Audition/Portfolio Review

drama.uconn.edu/programs/puppet-arts/bfa-puppetarts-application

Theatre Studies

Submit an Application & Schedule an Interview

drama.uconn.edu/programs/theatre-studies/admission

BACHELOR OF FINE ARTS

Acting

Puppet Arts

Design & Technical Theatre

Scenery Design

Costume Design

Lighting Design

Sound Design

Technical Direction

BACHELOR OF ARTS

Theatre Studies

Directing

Dramaturgy

Playwriting

Stage Management

Theatre Management

FIRST YEAR STUDENT FALL SEMESTER APPLICATION DATES

Email: dylan.delmastro@uconn.edu

FIRST YEAR STUDENT FALL SEMESTER APPLICATION DATES

DECEMBER 1

Priority First-Year Application Deadline for Merit Honors Consideration

JANUARY 15

Storrs Campus Freshman Application Deadline

FEBRUARY 15

FAFSA Deadline for Financial Aid Eligibility

MARCH 1

Admission Notification Begins

MAY 1

Regional Campuses Common Application Deadline

AUTOMATIC CONSIDERATION FOR MERIT SCHOLARSHIPS

UConn considers all freshman admission applicants for merit scholarships, and we're thrilled to award scholarships to hundreds of our most outstanding and deserving students each year.

UConn School of Fine Arts embraces diversity through:

- teaching, creative and scholarly research, and exhibitions and performances.
- our inclusive and welcoming community of faculty, students, and staff.
- engagement with Connecticut's schools and communities.

The University of Connecticut values and supports diversity in many ways:

In order to develop an inclusive community for instruction, research and outreach, the University of Connecticut embraces diversity and cultivates leadership, integrity, and engaged citizenship among our students, faculty and staff. This collegial and vibrant environment promotes and nurtures perspectives that are enabled through differences in culture, experience and values. To achieve this goal, the university emphasizes diversity in the recruitment, retention and advancement of students, faculty and staff.

To learn more, please visit diversity.uconn.edu and equity.uconn.edu






A Civil War Christmas

UConn
DRAMATIC ARTS

drama.uconn.edu

860.486.2281

dramarecruiter@uconn.edu

 /UConnDrama  /ctrepertorytheatre  /CTRepTheatre

802 Bolton Road, Unit 1127, Storrs, CT 06269